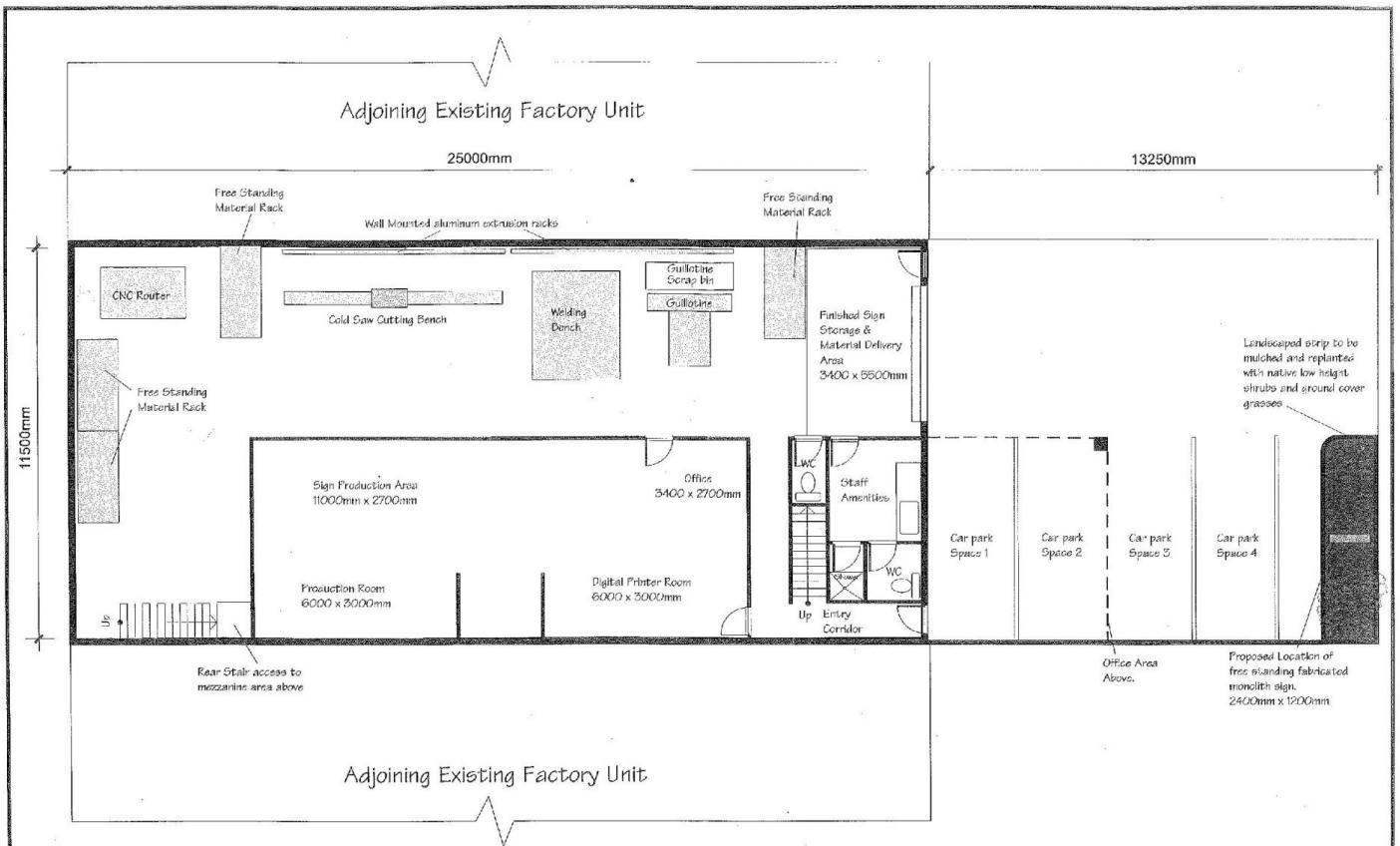




Botany

- ~ Freestanding Factory Warehouse
- ~ Container height roller shutter
- ~ Three phase power
- ~ Mezzanine offices / showroom with carpet and air-conditioning
- ~ Four off street car spaces plus large unloading area in front of roller shutter.
- ~ Zone: B7 Business Park.

Price : \$ 1,150,000
Building Size : 450 sqm
Land Size : 490 sqm
View : <https://www.cityalliance.com.au/sale/nsw/eastern-suburbs/botany/commercial/industrial/5665546>



Ground Floor

All existing wall shown as solid black outline



P: 0630 7140
 F: 0700 6506
 M: 0430 530 676
 E: info@kwsigns.com.au
 A: Unit 11/12-21 Wilton St Botany NSW 2019

Date	Page No	Scale
05-11-09	1 of 3	1:100
Site Location: 10 Rochester Street Botany		