

25 Carrington Road Marrickville NSW

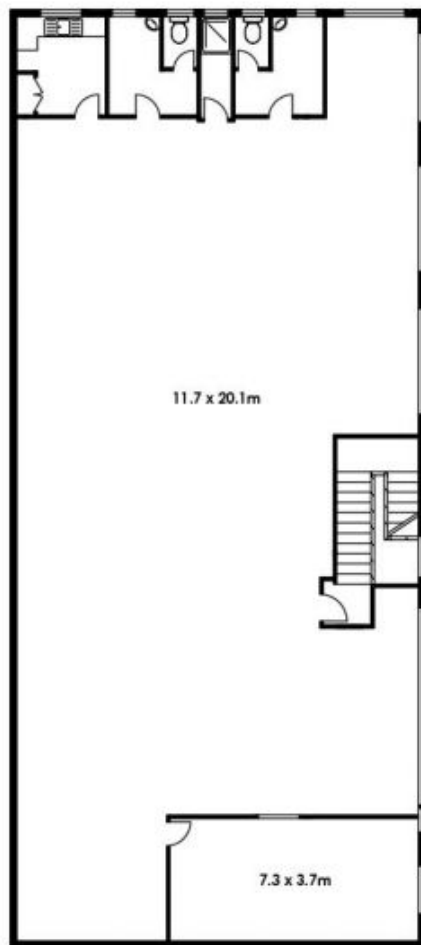
11 

~ 837sqm freestanding building comprising of 192sqm lower ground storage & carparking, 324sqm ground floor warehouse access via a loading dock and 321sqm offices on the top floor.

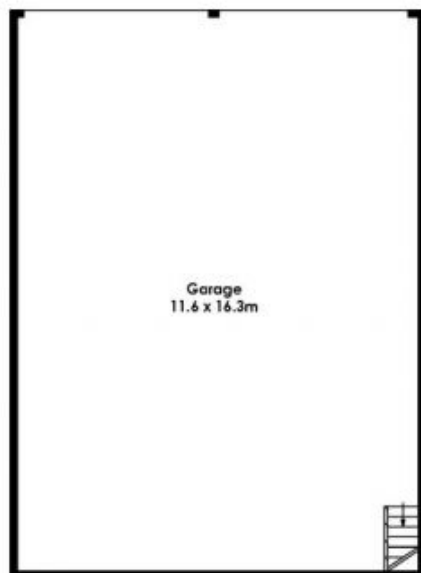
- ~ Light and bright with high ceilings.
- ~ Two levels are air-conditioned.
- ~ Dual roller shutter access.
- ~ Undercover secure car parking.
- ~ Two street frontage on Carrington Street and Schwebel Street.
- ~ Within 1 km of both Tempe and Marrickville Train Stations.
- ~ Close to Princes Hwy & Illawara Road.

Type : Industrial
Price : \$290/sqm Gross + GST
Building Size : 837 sqm
Land Size : 361 sqm
View : <https://www.cityalliance.com.au/lease/nsw/inner-west/marrickville/commercial/industrial/8110812>

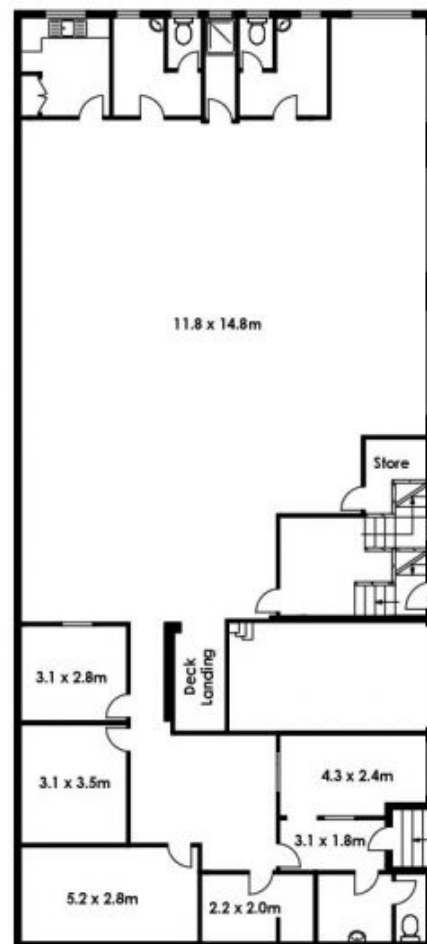
25 Carrington Road, Marrickville



Top Floor



Lower Ground Floor



Ground Floor



The information above is provided in good faith and has been provide to us from a variety of sources. We have not verified whether the information is accurate and do not have any belief one way or other in its accuracy. We do not accept any responsibility to any person for its accuracy and do no more than pass it on. All interested parties should rely on their own inquiries in order to determine whether or not this information is in fact accurate.